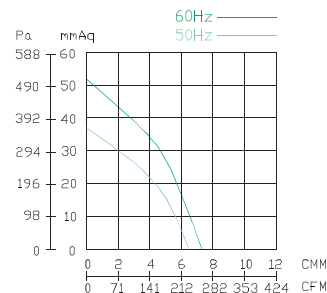
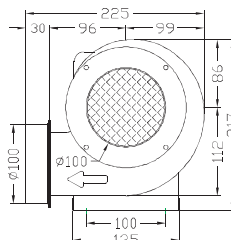
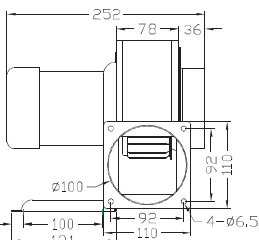
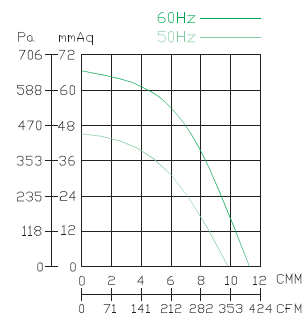
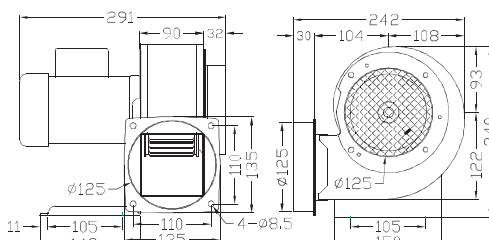
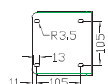




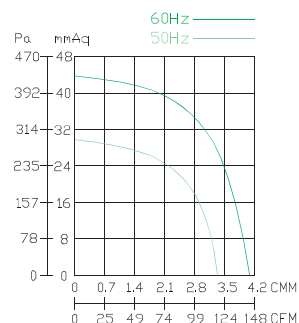
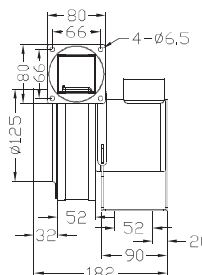
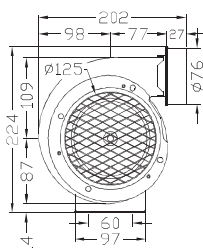
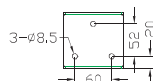
CY 120



CY 125



CY 127



Specification

Mode	Rated Voltage	Frequency	Phase	Pole	Current	Power	Speed	Max. Air Flow			Max. Pressure			Weight
	V	Hz	ø	P	A	Watt/HP	R.P.M.	CMM	m3/hour	CFM	mmAq	inchAq	Pa	KG
CY 120	110/220	50	1	2	1.15 / 0.50	1/8 HP	2870	6.4	384	226	46	1.81	451	4.3
		60			1.35 / 0.65		3330	7.3	438	409	37	1.46	363	
	220/380	50	3		0.5 / 0.3		2800	9.6	570	258	52	2.05	510	
		60			0.5 / 0.3		3480	11.6	696	409	66.6	2.62	653	
CY 125	110/220	50	1	2	2.4 / 1.2	200 W	2800	9.6	570	335	46	1.81	451	6.1
		60			3.0 / 1.5		3480	11.6	696	409	66.6	2.62	653	
	220/380	50	3		0.8 / 4.5		2800	9.6	570	335	46	1.81	451	
		60			1.0 / 0.55		3480	11.6	696	409	66.6	2.62	653	
CY 127	110/220	50	1	2	1 / 0.5	50 W	2840	3.3	198	116	30.5	1.20	299	3.7
		60			1 / 0.5		3320	4	240	141	44	1.73	432	
	220/380	50	3		4.5 / 0.3		2840	3.3	198	116	30.5	1.20	299	
		60			4.5 / 0.3		3400	4	240	141	44	1.73	432	