

**CENTER 390**

**SOUND LEVEL METER (Single Range, Datalogger, PC Interface)**  
(เครื่องวัดเสียงพร้อมเก็บข้อมูลในตัว)



**FEATURES**

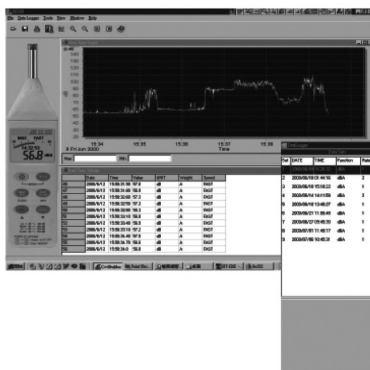
- Complies With IEC 61672-1 Class 2 Standard
- 32,000 Records Datalogger
- Manual Reading Recording Memory (99 points)
- LCD Recording Readout (99 Memory Recording)
- PC Interface
- With Windows Software
- AC/DC Signal Output
- Resolution 0.1dB

**SPECIFICATIONS**

Level Range	30~130dB
Accuracy	±1.4dB (ref 94dB@1KHz)
Frequency Weighting	A/C
Time Weighting	Fast, Slow
Frequency Range	20Hz to 8KHz
Microphone	1/2 inch Electret condenser microphone
Auxiliary Outputs	AC/DC Output
Battery	1.5V AA size battery x 4
Dimensions	272 x 83 x 42 mm
Weight	Approx. 390g

● **WINDOWS BASED SOFTWARE INTERFACE**

▶ **Real Time Control Window**



Operate the instrument direct on your PC screen. This friendly interface is identical to the tester itself and the user can operate it the same way they do with the meter.

**STANDARD ACCESSORIES**

Battery, Operation Manual, Carrying Case, Calibration Screwdriver, Windscreen, 3.5 Ø plug, Software SE-390, USB cable.



▶ **Datalogger Control Window**

The real time data and the recorded data can be download to the PC and present in text table or graphic chart. These data can also be saved in excel compatible file for further analysis.

**CENTER 326/327**

**SOUND LEVEL CALIBRATOR (1KHz, 125Hz/250Hz)**



**FEATURES**

- 94dB And 114dB Sound Calibrator At 1KHz(326)
- 94dB Sound Calibrator At 125Hz And 250Hz(327)
- Accurate And Simple To Use
- Fits 1 inch And 1/2inch Microphones
- Low Battery Indicator
- IEC 60942 (2003) Class 2, Ans 1.40-1984

**SPECIFICATIONS**

Output Sound Pressure Levels	114dB and 94dB re 20uPa under reference Conditions (326) 94dB re 20uPa under reference Conditions (327)
Output Frequency	1000Hz ±2%(326); 125Hz±2% and 250Hz ±2%(327)
Total Harmonic Distortion	<4%
Reference Condition	Temperature 23°C (73°F) Static press 103hpa Relative humidity 50%
Accuracy of sound pressure level	Understated reference environment conditions ±0.5dB
Battery test	Operate: Green LED indicator Low battery: Red LED indicator
Battery	9V battery
Dimensions	113 x 63 x 44 mm
Weight	Approx. 170g

**STANDARD ACCESSORIES**

Battery, Operation Manual, Carrying Case, Calibration Screwdriver, Windscreen, 3.5 Ø plug, Software SE-390, USB cable.